

# FS 7.40 MIDDLE

TECHNICAL SHEET



# FS 7.40 MIDDLE

## TECHNICAL FEATURES

Models	7.40	
<b>Dimensions</b>		
[A] Height		8 ft 0.4 in
[B] Width		7 ft 7 in
[C] Track		6 ft 1 in
[D] Ground clearance		14 in
[E] Front overhang		3 ft 4 in
[F] Pitch		9 ft 8 in
[G] Rear overhang		32 in
[H] Length without tow hook		15 ft 7 in
[I] Length with tow hook		16 ft 2 in
[L] Cab width		38 in
Width with stabilizers		-
<b>Loading system</b>		
Lifting capacity	lbs	7,716
Lifting height		23 ft 3 in
Max horizontal boom extension		11 ft 10 in
Boom extension at max height		8 in
Number of extracting sections	n.	1
Swinging Angle	°	144
<b>Tank capacity</b>		
Fuel tank	gal	31.7
Adblue tank	gal	2.6
Hydraulic oil tank	gal	31.7
<b>Connection equipment</b>		
Fh		●
FH Heavy		-
Euro		-
<b>Other</b>		
Telematics farmatics		○
Frame lateral levelling 10°		-
Front stabilizers		-
Rear axle swing block		-
Bucket mode		●

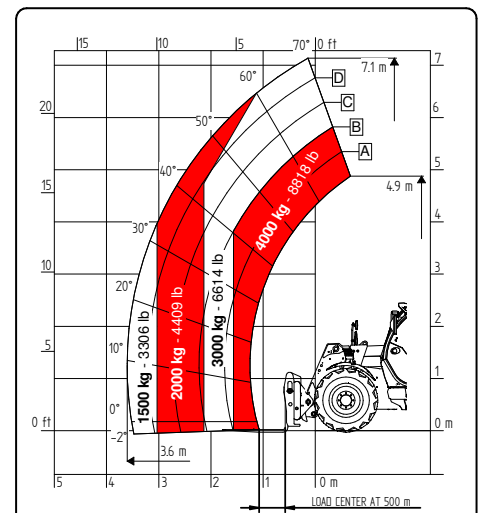
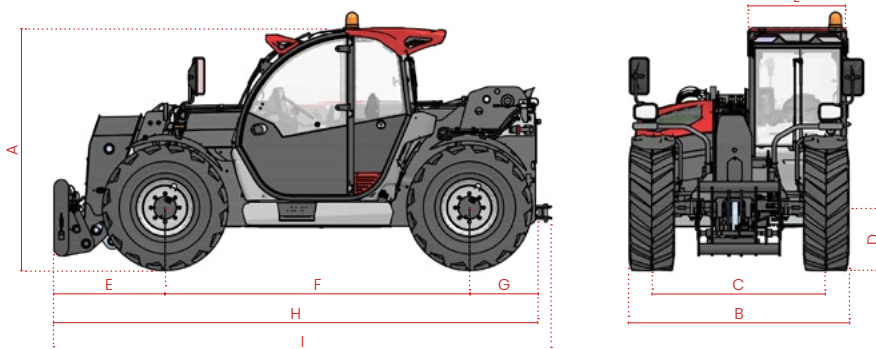
● Standard    ○ Optional    - Not available

Models	7.40	
<b>Maximum unladen weight</b>		
Classic 55	lbs	17,130
Classic 75	lbs	17,350
Dynamic 85	lbs	17,350
Performance 85	lbs	17,350
Excellence 85	lbs	17,461
Excellence HVTronic 100	lbs	17,703

Models	7.40	
<b>Drawbar pull</b>		
Classic 55	daN	5.800
Classic 75	daN	5.800
Dynamic 85	daN	5.800
Performance 85	daN	6.780
Excellence 85	daN	6.780
Excellence HVTronic 100	daN	10.000

Models	7.40	
<b>Tyres</b>		
Turning radius		13 ft 7 in
400/70 - 20"		●
400/70 - 24"		○*
460/70-R24" LIFT PRO OFFSET +29		○
460/70-R24" XMCL OFFSET +29		○
18 - 19.5 MPT-06 OFFSET +40		○

\* Standard for the Performance, Excellence and Excellence HVTronic configurations.



7.40

Configurations		Classic 55	Classic 75	Dynamic 85	Performance 85	Excellence 85	Excellence HVTronic 100
<b>Engine</b>							
Deutz 55,4/75	<input type="checkbox"/> STAGE V kW/hp	●	-	-	-	-	-
Deutz 75/102	<input type="checkbox"/> STAGE V kW/hp	-	●	-	-	-	-
Deutz 85/115	<input type="checkbox"/> STAGE V kW/hp	-	-	●	●	●	-
Deutz 100/136	<input type="checkbox"/> STAGE V kW/hp	-	-	-	-	○	●
Engine water preheating		○	○	○	○	○	○
Post-treatment system		DOC/DPF	DOC/DPF + SCR	DOC/DPF + SCR	DOC/DPF + SCR	DOC/DPF + SCR	DOC/DPF + SCR
Radiator fan		Proportional	Proportional	Proportional	Proportional + Reversible	Proportional + Reversible	Proportional + Reversible
<b>Hydraulics</b>							
pump type		Gears	Gears	Gears	LS piston	LS piston	LS piston
Hydraulic flow-rate	gal/psi	26.4/3,625	26.4/3,625	31.7/3,625	39.6/3,625	44.9/3,625	44.9/3,625
Flow sharing distributor		●	●	●	●	●	●
Electro-proportional joystick		Hydraulic	Hydraulic	Hydraulic	Hydraulic	CAN-BUS	CAN-BUS
Quick release		○	○	○	○	●	●
Boom suspension		○	○	○	○	○	○
Floating boom		○	○	○	○	●	●
Lifting valve		-	-	-	Ecofast	Ecofast-E	Ecofast-E
Manual 6-way diverter valve		○	○	○	○	●	●
Constant front flow		●	●	●	●	●	●
Creeper		●	●	●	●	●	●
Boom Electric Socket (PEB)		○	○	○	○	○	○
<b>Boom function</b>							
Height limiter		-	-	-	-	●	●
Electronic boom speed control		Full BSC	Full BSC	Full BSC	Full BSC	Full + Single BSC	Full + Single BSC
Autoretract		-	-	-	-	●	●
Controlled boom retraction		●	●	●	●	●	●
Bucket shaking		-	-	-	-	●	●
<b>Transmission</b>							
Hydrostatic single gear 15.5 mph		●	-	-	-	-	-
Hydrostatic single gear 18.6 mph		●	●	●	-	-	-
Hydrostatic two mechanical gears 24.8 mph		-	-	-	●	●	-
Hydrostatic continuous variation 24.8 mph		-	-	-	-	-	●
<b>Axles</b>							
45% limited slip self-locking differential front axles		●	●	●	●	●	●
Open type differential rear axles		●	●	●	●	●	●
100% differential lock rear axles		-	-	-	-	-	-
<b>Brakes</b>							
Service brake		Multi-disc in oil bath					
Parking brake		Multi-disc in oil bath with negative drive type SAHR					
Pneumatic / hydraulic trailer brake		-	-	○	○	○	○
<b>Lights</b>							
LED front lights		○	○	○	○	●	●
LED rear lights		●	●	●	●	●	●
LED front and rear work lights		○	○	○	●	●	●
LED boom work lights		○	○	○	○	○	○
Step courtesy light		○	○	○	●	●	●
Trailer lights rear socket		○	○	●	●	●	●
<b>Cabin</b>							
Cabin		Standard	Standard	Standard	Standard	Comfort Plus	Comfort Plus
Protection grille for windscreen		○	○	○	○	○	○
Touch colour display	"	5	5	5	5	7	7
Start and stop system		●	●	●	●	●	●
Internal rear-view mirror		○	○	○	●	●	●
Air conditioning		○	○	○	○	●	●
<b>Other</b>							
Tow hook		○	○	●	●	●	●

# TELEHANDLERS **NEXT GENERATION**



**FARESIN INDUSTRIES SPA  
HEADQUARTERS**

Via dell'Artigianato, 36  
36042 Breganze (Vicenza), Italy  
Tel. + 39 0445 800300  
faresin@faresin.com

**FARESIN DEUTSCHLAND GMBH**

Steinach B.R. - an der  
Frankenhoehe 1  
91605 Gallmerts Garten, Germany  
Tel. +49 9843 9802828  
lager@faresin.de

**FARESIN DEUTSCHLAND  
NORD GMBH**

Wissmannstr, 59  
27755 Delmenhorst, Germany  
Tel. +49 4221 800 989-0  
info@faresin-nord.de

**FARESIN POLAND SP. Z O.O.**

ul. Borowiacka 9  
87-100 Torun, Polska  
Tel. +48 503 147 811  
poland@faresin.com

**FARESIN INDUSTRIES  
FRANCE**

2 Rue de l'Avenir 14460  
Colombelles, France  
Tel + 33 2 31 82 79 61  
france@faresin.com

It brings to the attention of all potential customers, all recipients, and to the maximum extent possible, external interlocutors, that Faresin Industries S.p.A. adopts a general Disclaimer regarding the description of the technical and functional characteristics of its machineries, as well as the manner of their use, also with regard to their safety. The Disclaimer must be understood as having a general scope, and therefore Faresin Industries s.p.a. invites to know it, also by accessing the website: [faresin.com](http://faresin.com)

**FARESIN.COM**



01.2025