

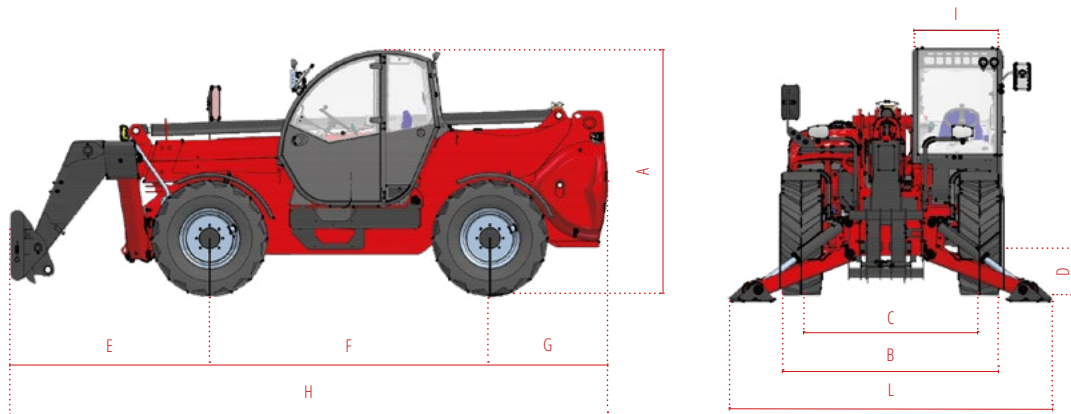
17.40 BIG

TECHNICAL SHEET



17.40 BIG

TECHNICAL FEATURES



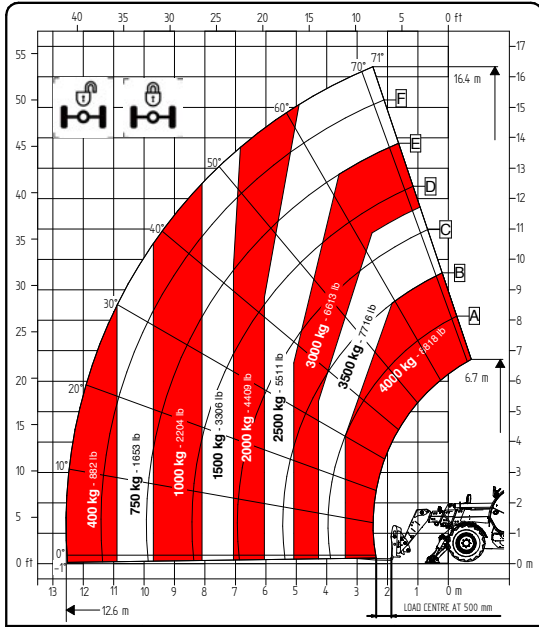
Models	17.40	
Dimensions		
[A] Height		8 ft 2 in
[B] Width		7 ft 8 in
[C] Track		6 ft 1 in
[D] Ground clearance		11 in
[E] Front overhang		7 ft 8 in
[F] Pitch		9 ft 8 in
[G] Rear overhang		49 in
[H] Length without tow hook		21 ft 5 in
[I] Cab width		38 in
[L] Width with stabilizers		11 ft 3 in
Maximum unladen weight		
Classic 55	lbs	25,706
Classic 74	lbs	26,037
Classic 75	lbs	-
Drawbar pull		
Classic 55	daN	5.000
Classic 74	daN	5.000
Classic 75	daN	5.000
Loading system		
Lifting capacity	lbs	8,818
Lifting height		53 ft 10 in
Max horizontal boom extension		41 ft 4 in
Boom extension at max height		8 ft 2 in
Number of extracting sections	n.	3
Swinging Angle	°	144
Tank capacity		
Fuel tank	gal	31.7
Adblue tank	gal	2.6
Hydraulic oil tank	gal	39.6
Connection equipment		
Fh		●
FH Heavy		-
Euro		-
Other		
Telematics farmatics		○
Frame lateral levelling 10°		●
Front stabilizers		●
Rear axle swing block		○
Bucket mode		●
Tyres		
Turning radius		13 ft 9 in
400/70-20 MPT01 PR14 OFF+35		●
400/70-24 OFFSET +29		○
400/70 - 24" OFFSET +29 NO MARK.		○
445/65 R22.5 OFFSET +50		○

Configurations	Classic 55	Classic 74
Engine		
Deutz 55,4/75	<input type="checkbox"/> STAGE V kW/hp ●	-
Deutz 74/101	<input type="checkbox"/> STAGE V kW/hp -	●
Engine water preheating	○	○
Post-treatment system	DOC/DPF	DOC/DPF + SCR
Radiator fan	Mechanical	Mechanical
Hydraulics		
Pump type	Gears	Gears
Hydraulic flow-rate	gal/psi 31.7/3,335	31.7/3,335
Flow sharing distributor	-	-
Elettro-proportional joystick	Mechanical	Mechanical
Quick release	○	○
Boom suspension	○	○
Floating boom	○	○
Manual 6-way diverter valve	○	○
Constant front flow	○	○
Creeper	○	○
Boom Electric Socket (PEB)	○	○
Transmission		
Hydrostatic single gear 15.5 mph	●	-
Hydrostatic single gear 18.6 mph	-	●
Axes		
45% limited slip self-locking differential front axles	●	●
Open type differential rear axles	●	●
Brakes		
Service brake	Multi-disc in oil bath	
Parking brake	Multi-disc in oil bath with negative drive type SAHR	
Pneumatic / hydraulic trailer brake	○	○
Lights		
Front lights	●	●
Rear lights	●	●
Front and rear work lights	○	○
Boom work lights	○	○
Rear trailer lights socket	○	○
Cabin		
Cabin	Standard	Standard
Protection grille for windscreen	○	○
Colour display	" 3,5	3,5
Start and stop system (IAS)	○	○
Air conditioning	○	○
Other		
Tow hook	○	○

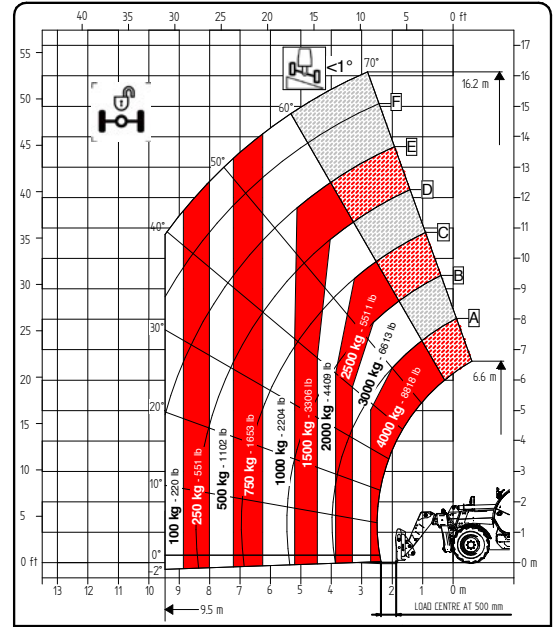
● Standard ○ Optional - Not available

17.40 BIG

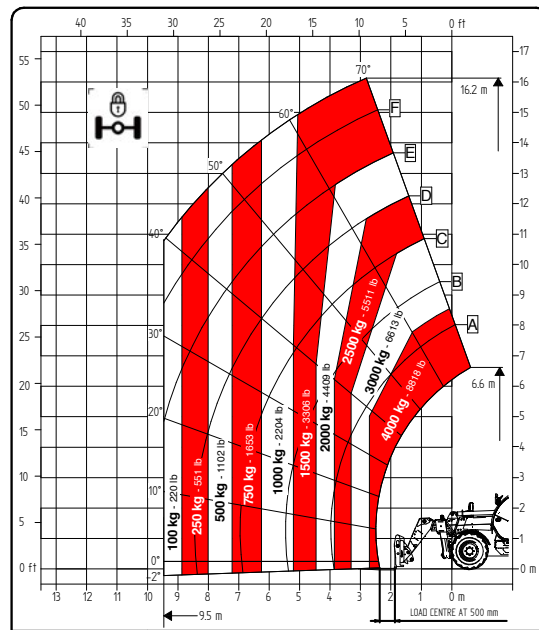
LOAD CHARTS



17.40



17.40



17.40

TELEHANDLERS **NEXT GENERATION**



**FARESIN INDUSTRIES SPA
HEADQUARTERS**

Via dell'Artigianato, 36
36042 Breganze (Vicenza), Italy
Tel. + 39 0445 800300
faresin@faresin.com

FARESIN DEUTSCHLAND GMBH

Steinach B.R. - an der
Frankenhoehe 1
91605 Gallmerts Garten, Germany
Tel. +49 9843 9802828
lager@faresin.de

**FARESIN DEUTSCHLAND
NORD GMBH**

Wissmannstr, 59
27755 Delmenhorst, Germany
Tel. +49 4221 800 989-0
info@faresin-nord.de

FARESIN POLAND SP. Z O.O.

ul. Borowiacka 9
87-100 Torun, Polska
Tel. +48 503 147 811
poland@faresin.com

**FARESIN INDUSTRIES
FRANCE**

2 Rue de l'Avenir 14460
Colombelles, France
Tel + 33 2 31 82 79 61
france@faresin.com

It brings to the attention of all potential customers, all recipients, and to the maximum extent possible, external interlocutors, that Faresin Industries S.p.A. adopts a general Disclaimer regarding the description of the technical and functional characteristics of its machineries, as well as the manner of their use, also with regard to their safety. The Disclaimer must be understood as having a general scope, and therefore Faresin Industries s.p.a. invites to know it, also by accessing the website: faresin.com

FARESIN.COM



04.2025